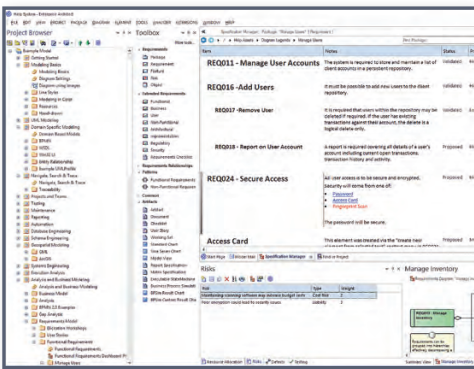




Complete Modeling Platform for Business Analysis

Build and Manage Requirements

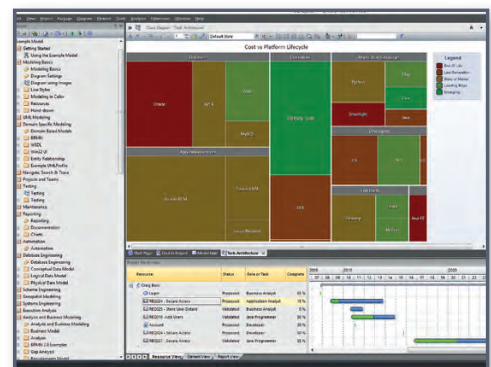


Use Enterprise Architect to build a coherent picture of a proposed system with built-in requirements management capabilities that are essential to a successful project.

- Create and view requirements directly in an Enterprise Architect model
- Build a coherent picture of a proposed system
- Identify and document relationships in a tabular format and via model/diagram
- Record essential element information such as status, difficulty and priority
- Document and trace requirements throughout the life of a project
- Verify strategic decisions and trace organizational objectives
- Capture business logic using business rules and business process models

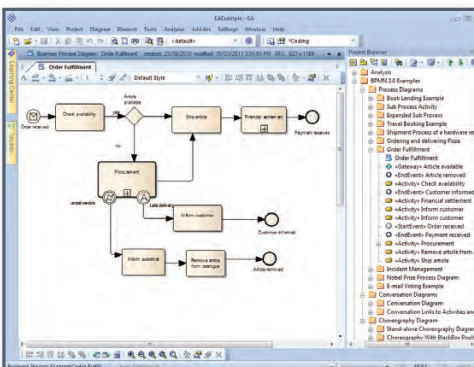
Analyze Heat Maps to Facilitate Decision Making

Enterprise Architect's Heat Maps can analyze enterprise wide data that influence strategic or project level decisions. Use simple visual cues, such as color and relative size, to convey information that can facilitate decision making, identify risk and improve analysis on model elements.



Use Case Analysis

Develop Use Cases to model system behavior and analyze how users interact with a system to achieve real world goals. Use alternative images for model elements to create realistic, yet easy to understand system models.



Analyze Business Processes and Rules

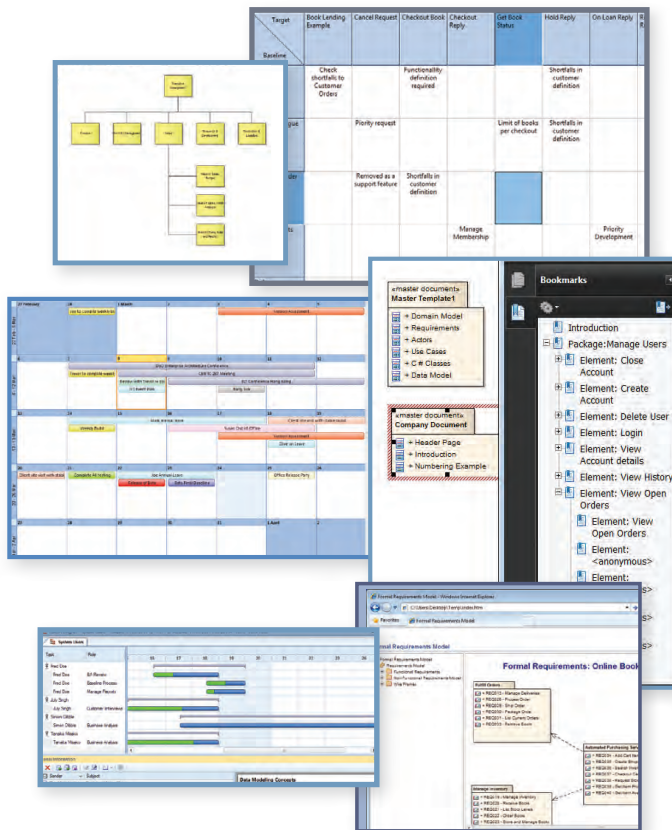
Document existing business practices, simulate and execute process flows. Industry-standard process modeling tools including BPMN and flow charts allow you to review future business needs. Configure simulations with BPSim. Exchange model information via BPMN XML Import/Export.



Share a Vision of your Enterprise

Strategic Modeling

Use Enterprise Architect to identify and establish meaningful strategic links between corporate strategy, operations, business rules and business process improvements. Leverage strategic planning tools such as a Balanced Scorecard, Decision Trees, Value Chains, Strategy Maps and Organizational Charts.



Testing

Enterprise Architect enables you to define test specifications, execute tests and record results directly from model elements. Using Enterprise Architect's structured scenarios you can automatically generate test case descriptions. Enterprise Architect is the complete platform for any Test Manager.

Screen Prototyping

Create rich and engaging screen prototypes for the web, mobile devices and traditional Win32 user interfaces. Link wireframes to Requirements, Use Cases, Structured Scenarios and supplementary design documentation.

Elicit feedback, verify design elements, engage key stakeholders and document evaluation within a team to enhance requirement management. Establish a relationship between user interface elements and system behavior.

Communicate with Stakeholders and Teams

Share a project vision, discuss ideas, compare designs and produce custom reports that are easily understood by IT and business professionals alike. Automatically produce documentation that can be used to highlight the 'value' of proposed system changes, business process improvements and strategic goals to create a compelling business case.

Collaborative tools such as Model Mail, Gantt Charts, Element Discussions, Gap Analysis and Team Review can be used to manage a project, co-ordinate resources and engage stakeholders in the development process.

You can source Chart data from within the model and from any number of external models concurrently, providing a consolidated Dashboard of the activity from multiple models at once, turning Enterprise Architect into the ultimate enterprise project reporting center.

Simulation

Enterprise Architect's Model Simulation helps verify system behavior and manage complexity. Visualize outcomes before resources are committed. Gain a better understanding of how your systems work.

Enterprise Architect supports BPSim, a specification for parameterization and exchange of process analysis data, allowing the creation, comparison and reuse of different simulation configurations stored within the model.