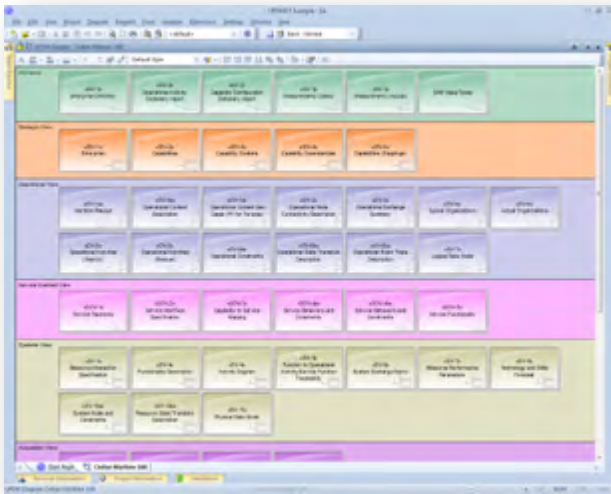


# UPDM<sub>2.1</sub>

## Unified Profile for DoDAF and MODAF

### Capture your Architectural Vision



#### **Build reliable, well understood systems using UPDM and Enterprise Architect**

The Unified Profile for DoDAF and MODAF (UPDM) is a modeling standard that supports both the US Department of Defense Architecture Framework (DoDAF) and the UK Ministry of Defence Architecture Framework (MODAF).

Sparx Systems Enterprise Architect along with "MDG Technology for UPDM" helps you maximize architectural rigor and improve mission outcomes.



**WE SET THE STANDARD™**  
Sparx Systems is a Contributing  
Member of the OMG

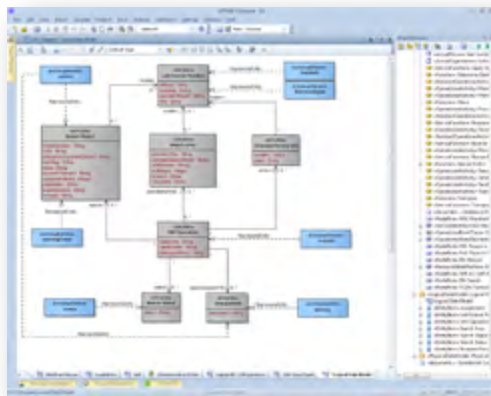
The Object Management Group logo is a trademark of The Object Management Group. All other product names are owned by their respective owners.

# UPDM 2.1



## Unified Profile for DoDAF and MODAF

Enterprise Architect can be used to specify operational capabilities, services and interactions between complex systems, as well as trace systems to strategies and organizations to verify architectural completeness. Harness the best practices of DoDAF and MODAF to develop well-formed models with clear separation of stakeholder concerns.



### Functions:

Create architectural models for complex system-of-systems, which may include hardware, software, data, personnel and organizations.

Define consistent, accurate architectures with clear separation of concerns to describe services, systems, operations, strategies and capabilities.

Analyze, specify, design, and verify system models using appropriate levels of abstraction.

Employ a rigorous, standards based approach to defining and exchanging architecture information using UML, XMI and related standards.

### Features:

Comprehensive UML Profiles for UPDM 2.1, which supports DoDAF 2.0 and MODAF 1.2.

A visual, clickable framework interface for UPDM model hierarchies.

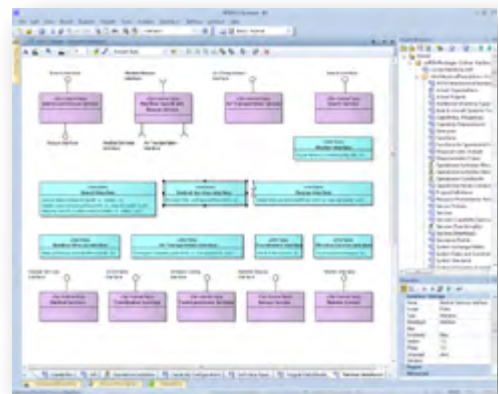
UPDM model templates with context-sensitive modeling to maximize productivity.

Model validation to help ensure consistency and correctness.

Easy navigation of architecture diagrams in the dynamic Model Views window.

Profiles for Enterprise Architect's Package Browser and Relationship Matrix to display and edit the model in tabular form.

Detailed example model.



**Please Note:** Users of MDG Technology for UPDM also have access to MDG Technology for DoDAF-MODAF.