

# Requirements Management

in Enterprise Architect

## Deliver Higher Quality Solutions

Sparx Systems Enterprise Architect is a comprehensive modeling environment with collaborative tools to optimize business processes, prototype and simulate systems, document business rules, model and trace requirements, as well as simplify software design. Enterprise Architect is a scalable integration solution within a single platform - model, design, trace, construct, test, deploy and manage your software, business and systems development across the entire enterprise.

### Model Requirements

#### Requirements in Depth

Create and view requirements as elements directly within the Enterprise Architect model and record essential information including status, difficulty, priority, description, functional vs. non-functional, and more. Add custom properties to record and measure project-specific data such as estimated cost and stakeholders sign-off.

#### Essential Information at a Glance

Model inter-relationships and dependencies with automated element numbering and use color to indicate the status of each element. Elements can also be viewed and added in a hierarchical table format.

#### Analyze and Trace

Trace to design, build, deployment and beyond  
Enterprise Architect is distinguished among UML tools by its built-in requirements management capabilities. Being able to create requirements directly in the model allows you to maximize traceability and connectivity with downstream processes.

#### Diverse Views

Identify and document relationships in a tabular format with the relationship matrix, then use the traceability window to analyze the impact of change. Record continuous changes to the requirements model using auditing, which allows you to critically inspect every change.

#### Recording Project Milestones

Use base-lining in Enterprise Architect to take a snapshot of your project at a moment in time. Then compare this snapshot to the latest version of the model, to identify and roll-back individual changes to a prior state, as required.

## KEY TOOLS

- ✓ Visualize Requirements
- ✓ Model Use Cases
- ✓ Trace Requirements through to Implementation
- ✓ Analyze the Impact of Change
- ✓ Communicate with Stakeholders
- ✓ Share a Common Glossary
- ✓ Generate Requirements Specifications

# Requirements Management

**Bridge the Business-IT gap and deliver an accurate, timely solution.**

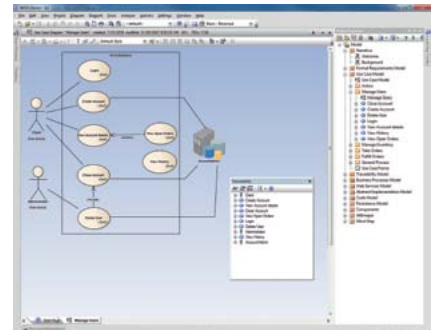
## Downstream Development

Delivering on the Promise of Model Driven Development

Define a hierarchical requirements model and Use Cases, then automatically create downstream artifacts using the Structured Scenarios editor. Artefacts available for generation include sequence diagrams, test cases, activity diagrams and much more - giving your data added scope and depth.

Visualize Business Processes, Rules and User Interfaces

Capture and utilize valuable business logic using Business Rules and Business Process Models with BPMN. Help validate user interface requirements and secure stakeholder buy-in using mock-ups with Enterprise Architect's Win32 User Interface tools.



## Collaboration

Detailed Reporting

Create presentation-ready reports with built-in RTF, HTML and PDF documentation. You can report on an entire project, selected parts of the model, or group packages as you like.

Manage Resources and Coordinate Teams

Manage projects and coordinate resources using Model Mail, Team Review, Gantt Charts and Gap Analysis. Sparx Systems also offers a free, read only version – so that customers and stakeholders can observe the progress of their projects.

Simplify Team Communications

When communicating complex technical concepts, simplify diagram interpretation by selecting alternative images for model elements. Enterprise Architect's project glossary, provides an in-place explanation, to help promote a shared understanding of project terminology.

## Gathering Requirements

Capture Better Requirements

Import requirements from external CSV files as well as 3rd party tools, also drag and drop requirements directly from written documents into Enterprise Architect to automatically create requirement elements. Link documents from model elements, to incorporate written requirements and user stories.

