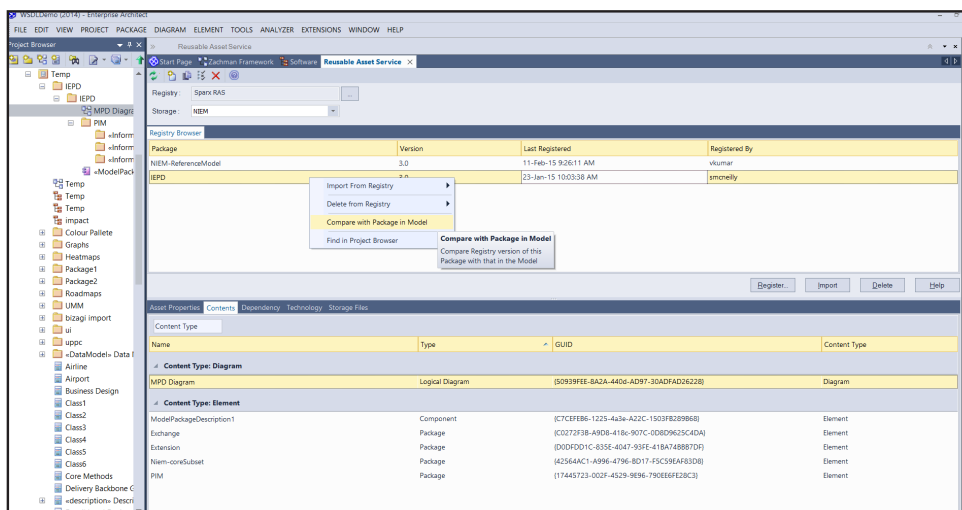


Reusable Asset Service

The Reusable Asset Service (RAS) is the perfect solution for Standards Development Organizations. Share and distribute reusable model packages in an open, uniform and timely manner using the Enterprise Architect Reusable Asset Service.



Challenge

For groups, be they local, national or international, sharing common data, standards and modeling structures is made difficult by the separation of distance or the difference of networks. With the added burden of complexity from having to use external version control tools, or manually distribute XMI files between projects, the difficulties are compounded.

Solution

The Reusable Asset Service (RAS) within Enterprise Architect provides a shared remote registry, accessible via a Cloud Service connection.

Using this standardised solution, modelers can easily and conveniently, distribute or download data resources, be they reusable model structures, information, corporate directives or standards.

Reusable Asset Service can store multiple versions of an Asset in the same storage

Multiple Access - Single Source

Ownership and management of the reusable model resource - or asset - can be retained by the author or originator, while access is provided to others who can conveniently review the currency of the information and download the latest versions into their models or file folders.

For distributed teams RAS also provides convenient access to a single 'source of truth' for shared data, including project milestones, architectural frameworks and industry standards.



Password protected Assets

Repositories can contain any number of Storages. Each Store can contain any number of Asset Packages holding modeling structures, and files containing textual or graphical information and data.

By defining their own password protection, users can protect the contents of a Storage, from being updated in the Registry or downloaded into a model.

